

SR 64 EAST

CITY OF BRADENTON- CHAPTER 4.0 GENERAL REGULATIONS

SEC. 4.1.4.4 LANDSCAPING REQUIREMENTS  
 ALL COMMERCIAL AND MULTI-FAMILY STRUCTURES (THREE OR MORE DWELLING UNITS) SHALL HAVE FOUNDATION LANDSCAPING AS REQUIRED IN SECTION 4.1.4.4.D.III. ALTERNATIVE LANDSCAPING FOR THE UC AND UCBD SHALL BE SUBJECT TO APPROVAL BY THE PCD DIRECTOR. ALL PARKING AND VEHICULAR USE AREAS, WITH THE EXCEPTION OF THOSE SERVING SINGLE-FAMILY AND TWO-FAMILY HOUSES, SHALL BE LANDSCAPED IN ACCORDANCE WITH THIS SUBSECTION. THE LANDSCAPING REQUIREMENT MAY BE WAIVED BY THE PCD DIRECTOR FOR A SPECIFIC PERIOD OF TIME FOR PHASED DEVELOPMENT OR ON A PERMANENT BASIS FOR INFREQUENTLY USED PARKING AREAS SUCH AS THOSE FOR RECREATIONAL FACILITIES OR OVERFLOW PARKING AREAS. CREDIT TOWARD REQUIRED LANDSCAPING MATERIALS MAY ALSO BE PROVIDED BY THE PCD DIRECTOR IF EXISTING VEGETATION IS PRESERVED AS PART OF THE PROPOSED DEVELOPMENT.

FOUNDATION LANDSCAPING  
 FOUNDATION LANDSCAPING SHALL BE PLANTED IN THE AMOUNT OF 100 SQUARE FEET OF PLANTING AREA PER 1,500 SQUARE FEET OF BUILDING GROUND FLOOR AREA. PLANTING AREAS SHALL BE RAISED OR GROUND LEVEL AND BE A MINIMUM OF EIGHT FEET WIDE AND LOCATED ON THE SIDE OF THE BUILDING VISIBLE FROM A PUBLIC RIGHT-OF-WAY.

4,081 S.F. BUILDING / 1,500 = 2.7 X 100 = 272 SF BUILDING FOUNDATION LANDSCAPING REQUIRED  
 294 SF BUILDING FOUNDATION LANDSCAPING PROVIDED

SCHEDULE 4.1.4.4 - LANDSCAPING REQUIREMENTS FOR PARKING AND VEHICULAR USE AREAS  
 A TEN-FOOT WIDE LANDSCAPED BUFFER STRIP SHALL BE PROVIDED BETWEEN EACH PROPERTY LINE AND ANY VEHICULAR USE AREAS. SEE SUBSECTION 4.1.4.4.D.II. FOR REDUCTION IN UV, UC AND UCBD DISTRICTS, AND SUBSECTION 4.1.4.4.D.III. FOR REDUCTION WHEN ABUTTING COMMERCIAL PROPERTIES. THE BUFFER STRIP SHALL EXTEND THE FULL LENGTH OF THE PROPERTY LINE, EXCLUDING APPROVED ACCESS POINTS. BUFFER STRIPS SHALL BE LANDSCAPED ACCORDING TO THE FOLLOWING MINIMUM REQUIREMENTS, UNLESS OTHERWISE DETERMINED BY THE PCD DIRECTOR.

BUFFER STRIP ALONG PUBLIC R.O.-W  
 LANDSCAPING MATERIALS PLUS ONE NATIVE TREE FOR EACH 50 LINEAR FEET OF BUFFER OR FRACTION THEREOF PLUS A HEDGE, FENCE OR WALL, AT LEAST TWO FEET IN HEIGHT AND AT LEAST 80% OPAQUE WITHIN TWO YEARS ALONG THE FULL LENGTH OF THE BUFFER. IF A FENCE OR WALL IS USED, ONE SHRUB OR VINE PER TEN FEET, THEREOF.

SR 64 EAST:  
 188 L.F. / 50 = 4 TREES AND CONTINUOUS HEDGE REQUIRED  
 5 TREES (EXISTING) AND CONTINUOUS HEDGE PROVIDED

BUFFER STRIP ALONG INTERIOR PROPERTY LINE  
 LANDSCAPING MATERIALS PLUS ONE NATIVE TREE FOR EACH 75 LINEAR FEET OF BUFFER OR FRACTION THEREOF.

WEST PROPERTY LINE:  
 303 L.F. / 75 = 4 TREES AND CONTINUOUS HEDGE REQUIRED  
 4 TREES AND CONTINUOUS HEDGE PROVIDED

ADDITIONAL LANDSCAPING ON INTERIOR OF PARKING AREA  
 TEN SQUARE FEET OF AREA WITH LANDSCAPING MATERIALS FOR EACH PARKING SPACE EXCLUDING PERIMETER SPACES. IN ADDITION, 10 S.F. OF AREA WITH LANDSCAPING MATERIALS FOR EACH 500 S.F. OF PAVEMENT NOT USED FOR PARKING AND ONE TREE PER 200 S.F. OF INTERIOR LANDSCAPING.

16 PARKING SPACES X 10 SF. = 160 SF. ADDITIONAL INTERIOR LANDSCAPING  
 12,583 SF. PAVING / 500 SF. = 25 X 10 SF. = 250 SF ADDITIONAL LANDSCAPING AND 4 TREES REQUIRED  
 250 SF ADDITIONAL LANDSCAPING AND 4 TREES PROVIDED

PLANT SCHEDULE

SYMBOL	CODE	BOTANICAL / COMMON NAME	QTY	SIZE
<b>TREES</b>				
	LRS	LIQUIDAMBAR ROTUNDILOBA / SWEET GUM	4	65 GAL., 3.5" CALIPER, 14' HT. X 5' SPD., 5' CT
	QVH	QUERCUS VIRGINIANA / CATHEDRAL LIVE OAK	5	65 GAL., 3.5" CALIPER, 14' HT. X 5' SPD., 5' CT
	SAP	SABAL PALMETTO / CABBAGE PALMETTO	3	FIELDGROWN, 10'- 16" CLEAR TRUNK HT., BOOTED
<b>SHRUBS</b>				
	HAM	HAMELIA PATENS 'CALUSA' / FIREBUSH	15	7 GAL., 36" HT. X 24" SPD., @ 3' O.C. SPACING
	VOD	VIBURNUM ODORATISSIMUM / SWEET VIBURNUM	171	3 GAL., 30" HT. X 18" SPD., @ 3' O.C. SPACING
<b>SHRUB AREAS</b>				
	IVN	ILEX VOMITORIA 'SCHILLINGS DWARF' / DWARF YAUPON HOLLY	95	3 GAL., 12" HT. X 12" SPD., @ 30" O.C. SPACING
	PLM	PLUMBAGO AURICULATA 'IMPERIAL BLUE' / IMPERIAL BLUE PLUMBAGO	22	3 GAL., 24" HT. X 24" SPD., @ 3' O.C. SPACING
	SPB	SPARTINA BAKERI / SAND CORDGRASS	30	3 GAL., 24" HT. X 24" SPD., @ 3' O.C. SPACING
<b>GROUND COVERS</b>				
	ARG	ARACHIS GLABRATA 'ECOTURF' / PERENNIAL PEANUT	49	1 GAL., 12" SPD., FULL. @ 18" O.C. SPACING

ALPHA PACIFICA LLC  
 LANDSCAPE ARCHITECTURE • WATER FEATURES  
 3111 COURTLAND AVENUE WINTER PARK, FLORIDA 32789  
 (407) 674-8988 OFFICE ALPHA.PACIFIC@ALPHA.PACIFIC.COM

SCALE AS NOTED  
 DESIGNED BY GR  
 DRAWN BY BW  
 CHECKED BY GR

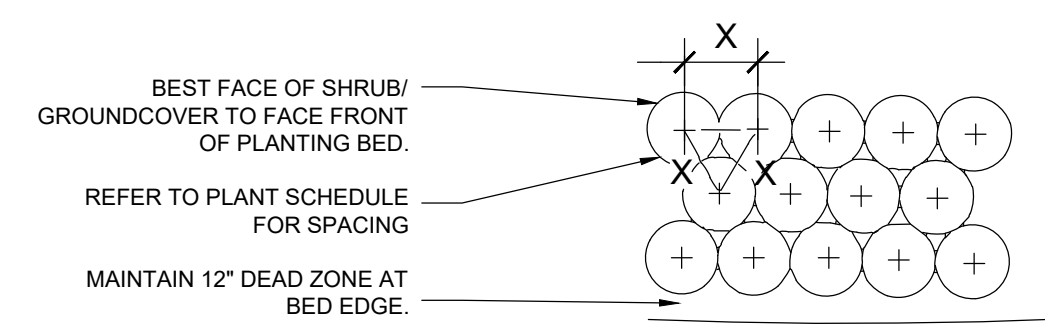
LANDSCAPE PLAN

SHERWIN WILLIAMS  
 SR 64 EAST

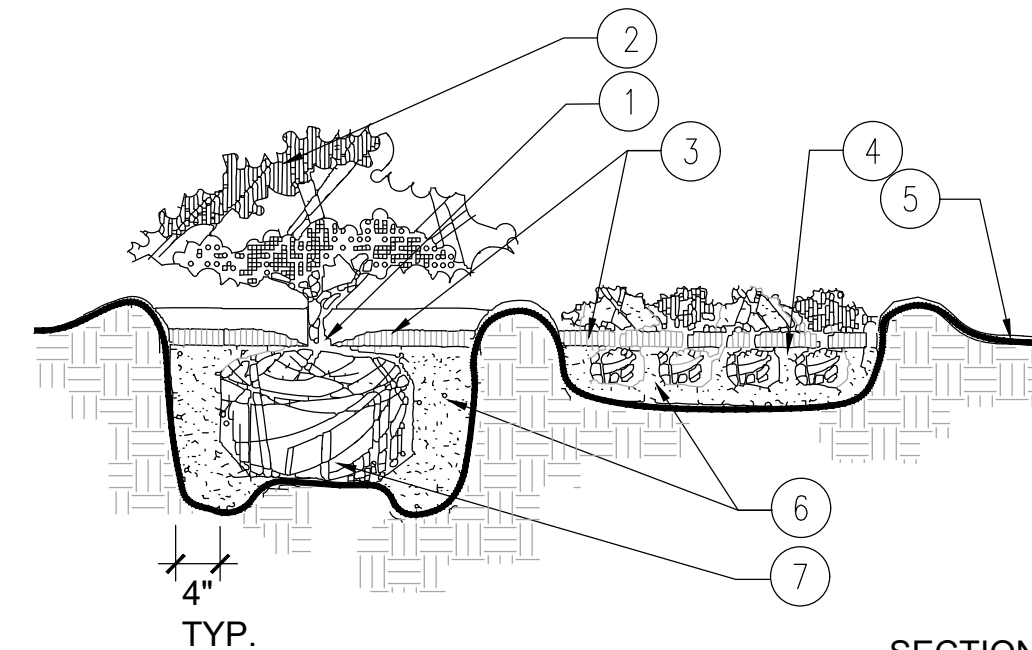
BRADENTON FLORIDA

DATE 11/14/25  
 PROJECT NO.  
 SHEET NUMBER L-1.0

811 KNOW WHAT'S BELOW ALWAYS CALL 811 BEFORE YOU DIG  
 It's fast. It's free. It's the law.  
 www.callsunshine.com



PLAN

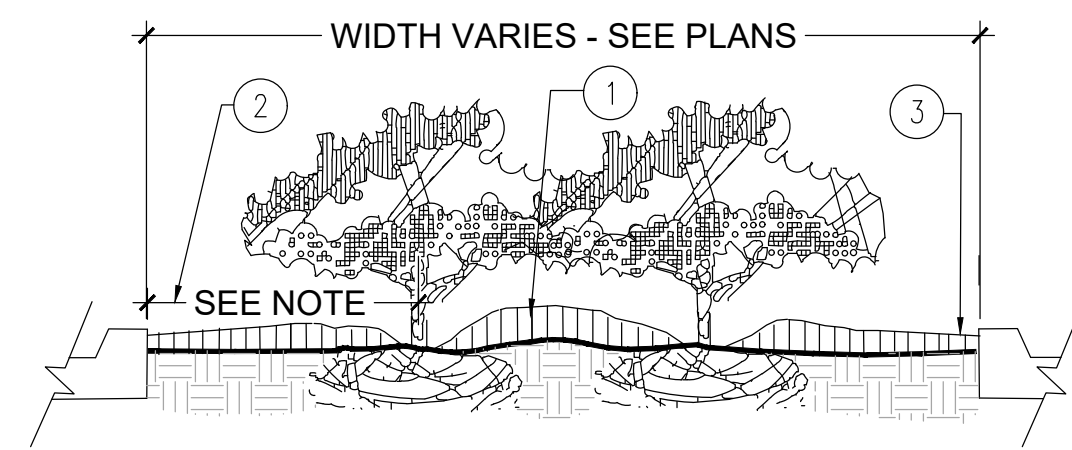


SECTION

NOTES:

1. TOP OF SHRUB ROOTBALLS TO BE PLANTED 1" - 2" HIGH WITH SOIL MOUNDING UP TO THE TOP OF ROOTBALL.
2. PRUNE ALL SHRUBS TO ACHIEVE A UNIFORM MASS HEIGHT.
3. 3" MINIMUM MULCH AS SPECIFIED.
4. EXCAVATE ENTIRE BED SPECIFIED FOR GROUND COVER BED.
5. FINISHED GRADE (SEE GRADING PLAN).
6. PREPARED PLANTING SOIL AS SPECIFIED. (SEE LANDSCAPE NOTES)
7. SCARIFY ROOTBALL SIDES AND BOTTOM.

1 SHRUB / GROUND COVER PLANTING NOT TO SCALE



PLANTER ISLAND NOTES:

1. CROWN ISLANDS @ 5:1 SLOPES (OR AS SPECIFIED ON THE LANDSCAPE PLANS).
2. CLEAR ZONE: 36" MIN. FROM BACK OF CURB TO CENTER OF NEAREST SHRUB. CLEAR ZONE SHALL CONTAIN 3" CONTINUOUS MULCH OR TURF. SEE PLANS.
3. 2" MIN VERTICAL CLEARANCE, TOP OF CURB TO TOP OF MULCH.

NOTES:

- a. EXCAVATE A CONTINUOUS 24" DEEP PIT (FROM TOP OF CURB) FOR ENTIRE LENGTH AND WIDTH OF ISLAND & BACKFILL WITH APPROVED PLANTING MIX. PROTECT AND RETAIN ALL CURBS AND BASE. COMPACTED SUBGRADE TO REMAIN FOR STRUCTURAL SUPPORT OF CURB SYSTEM (TYP).
- b. ALL ISLANDS SHALL UTILIZE POOR DRAINAGE DETAIL WHEN PERCOLATION RATES ARE 2" PER HOUR OR LESS.

2 PARKING LOT ISLAND PLANTING NOT TO SCALE

NOTES:

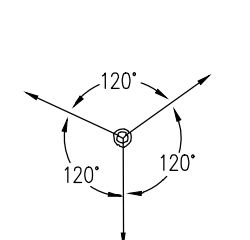
1. CONTRACTOR SHALL ENSURE FREE DRAINAGE/PERCOLATION OF ALL PLANTING PITS PRIOR TO INSTALLATION.
2. ALL TREE PITS SHALL BE APPROXIMATELY 1.5 TIMES LARGER THAN ROOT BALL.
3. FINAL TREE STAKING DETAILS AND PLACEMENT TO BE APPROVED BY THE LANDSCAPE ARCHITECT.
4. PRESSURE TREATED PINE TO BE USED FOR ALL WOOD STAKING AND BRACING MEMBERS.



- 2" NYLON STRAPPING OR APPROVED EQUAL
- 2" X 2" X 8' WOOD STAKES OR APPROVED EQUAL
- 3" MULCH AS SPECIFIED, 24" MINIMUM FROM BASE OF TREE
- BERM SOIL TO HOLD WATER

- REMOVE TOP 1/3 OF DEGRADABLE BURLAP AND TUCK BELOW SOIL TO AVOID WICKING. DO NOT DISTURB BURLAP AROUND THE FIBROUS ROOTS.
- PLANTING OR EXISTING SOIL BACKFILL. AMEND AS NECESSARY PER SOIL ANALYSIS
- ROOT BALL SET 3"-4" ABOVE FINISHED GRADE
- UNDISTURBED SOIL PEDESTAL FOR ROOT BALLS 24" DIAMETER AND GREATER
- EXISTING SUBGRADE

3 MULTI-TRUNK TREE PLANTING DETAIL NOT TO SCALE



PLAN

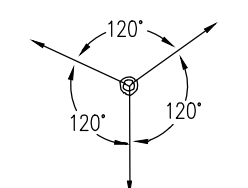
1. MINIMUM OF NINE (9) GOOD PALM FRONDS.
2. PRUNE AND TIE FRONDS WITH HEMP TWINE. CABBAGE PALMS TO BE SELECTIVELY "HURRICANE CUT", LEAVING 3-4 SMALLER, TRIMMED FRONDS.
3. 5 LAYERS OF BURLAP TO PROTECT TRUNK.
4. FIVE 2" X 4" X 18" WOOD BATTENS
5. SECURE BATTENS WITH 2- 3/4" CARBON STEEL BANDS TO HOLD BATTENS IN PLACE. NO NAILS SHALL BE DRIVEN INTO PALM. HEIGHT OF BATTENS SHALL BE LOCATED IN RELATION TO THE HEIGHT OF THE PALM FOR ADEQUATE BRACING.
6. (3) 2"x4"x8" SUPPORTS. NAIL (DRILL AND NAIL IF NECESSARY) TO BATTENS AND 2" X 4" STAKES. FLAG AT MIDPOINT AND AT BASE.
7. PROVIDE FLAGGING AT MIDPOINT AND BASE
8. 3" SPECIFIED MULCH.
9. BERM SOIL TO HOLD WATER.
10. FINISH GRADE
11. 2X4X24" (MIN) P.T. WOOD STAKES (TYP.) NAIL TO SUPPORT POLES.
12. PREPARED PLANTING SOIL AS SPECIFIED. (SEE LANDSCAPE NOTES).

NOTES:

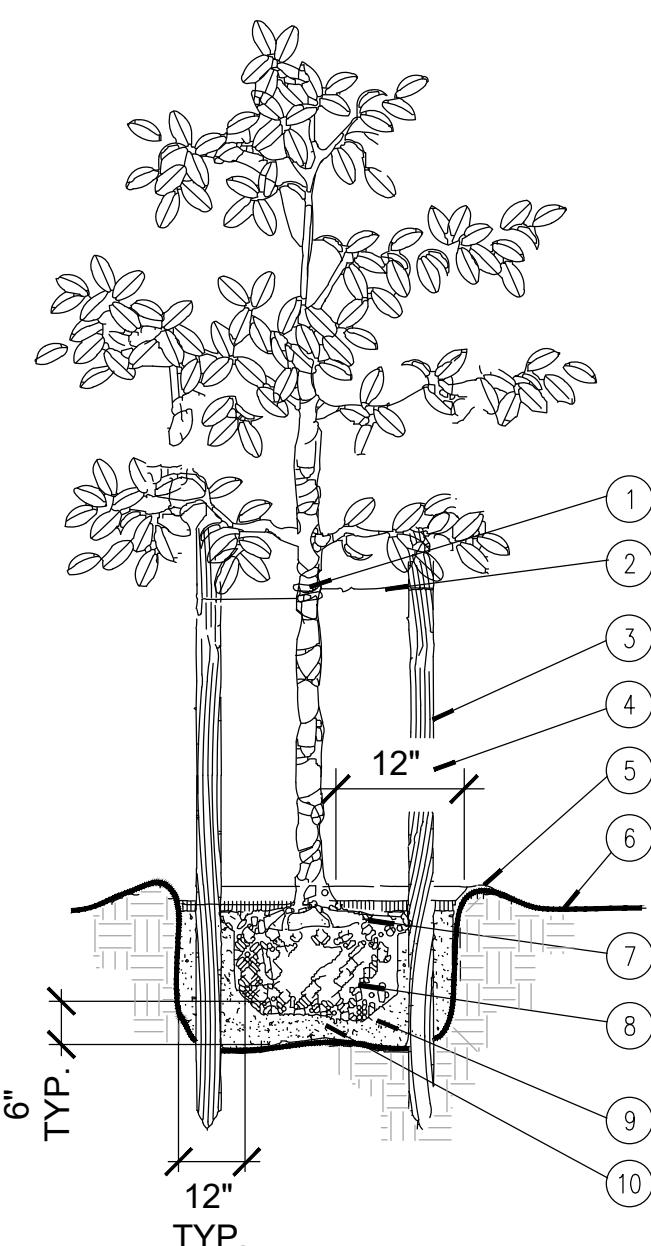
- A. CONTRACTOR SHALL ASSURE PERCOLATION OF ALL PLANTING PITS PRIOR TO INSTALLATION.
- B. FINAL TREE STAKING DETAILS AND PLACEMENT TO BE APPROVED BY OWNER.
- C. "TREE SAVER" ANCHORING SYSTEM MAY BE SUBSTITUTED FOR WOOD STAKING SYSTEM UPON APPROVAL BY OWNER OR THE LANDSCAPE ARCHITECT.
- D. DO NOT INSTALL WEED BARRIER ON TOP OF TREE ROOTBALLS AS THE INSPECTOR WILL NOT BE ABLE TO VERIFY THE REMOVAL OF NON-BIODEGRADABLE TREE BALL EQUIPMENT.

SECTION

4 PALM PLANTING DETAIL NOT TO SCALE



PLAN



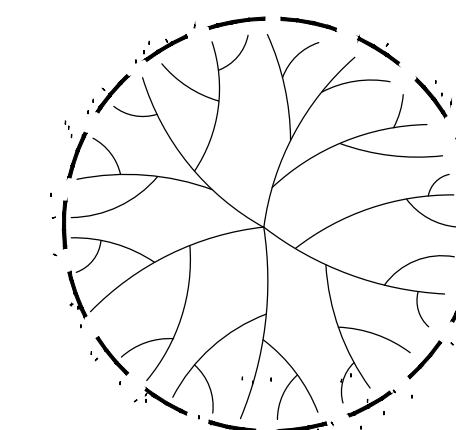
SECTION

1. PROTECT TREE TRUNK WITH BLACK RUBBER HOSE.
2. #10 GAUGE WIRE (NOTE FOR MULTI-TRUNK TREES, GUY TO STRONGEST TRUNK AT CENTER).
3. (3) 2" X 8' LODGE POLES SPACE EVENLY AROUND TREE.
4. NO MULCH SHALL BE PLACED WITHIN 12" - 18" OF TRUNK FLARE.
5. SOIL BERM TO HOLD WATER.
6. FINISHED GRADE- SEE CIVIL ENGINEER'S GRADING AND DRAINAGE PLAN.
7. TOP OF ROOTBALL MIN. 1" ABOVE FINISHED GRADE.
8. FIELDGROWN OR CONTAINER- SEE SPECIFICATIONS FOR ROOT BALL REQUIREMENTS.
9. PREPARED PLANTING SOIL AS SPECIFIED.
10. ROOTBALLS GREATER THAN 24" DIAMETER SHALL BE PLACED ON MOUND OF UNDISTURBED SOIL TO PREVENT SETTLING. ROOTBALLS SMALLER THAN 24" IN DIA. MAY SIT ON COMPACTED EARTH.

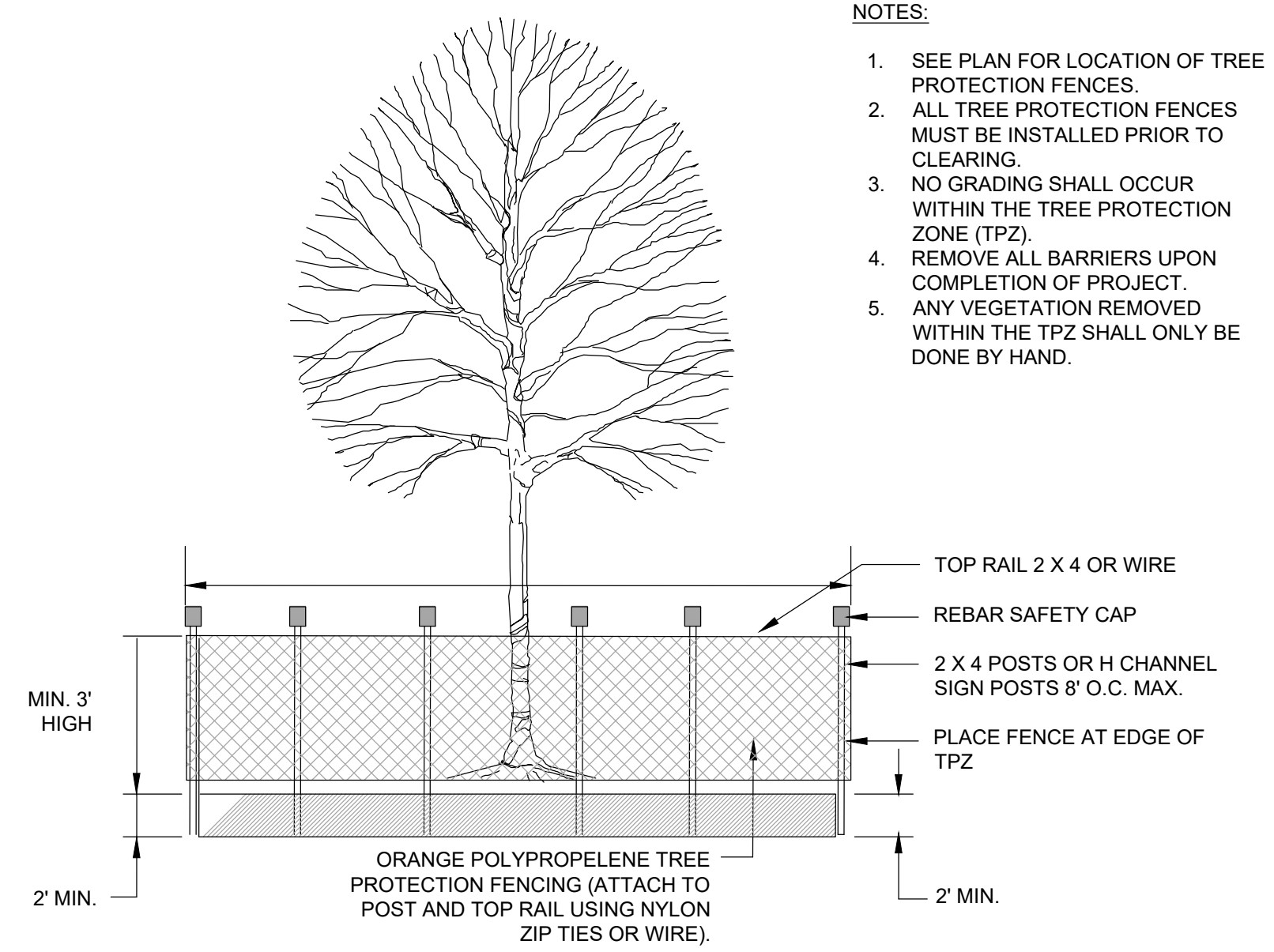
NOTES:

- A. CONTRACTOR SHALL ASSURE PERCOLATION OF ALL PLANTING PITS PRIOR TO INSTALLATION.
- B. FINAL TREE STAKING DETAILS AND PLACEMENT TO BE APPROVED BY OWNER.
- C. "TREE SAVER" ANCHORING SYSTEM MAY BE SUBSTITUTED FOR WOOD STAKING SYSTEM UPON APPROVAL BY OWNER OR THE LANDSCAPE ARCHITECT.
- D. DO NOT INSTALL WEED BARRIER ON TOP OF TREE ROOTBALLS AS THE INSPECTOR WILL NOT BE ABLE TO VERIFY THE REMOVAL OF NON-BIODEGRADABLE TREE BALL EQUIPMENT.

5 CANOPY TREE PLANTING DETAIL NOT TO SCALE



PLAN



SECTION

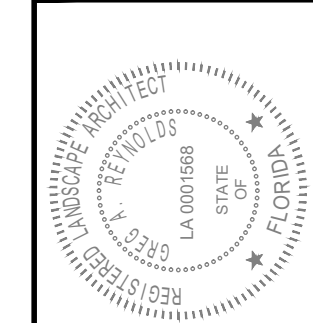
6 TREE PROTECTION FENCING DETAIL NOT TO SCALE

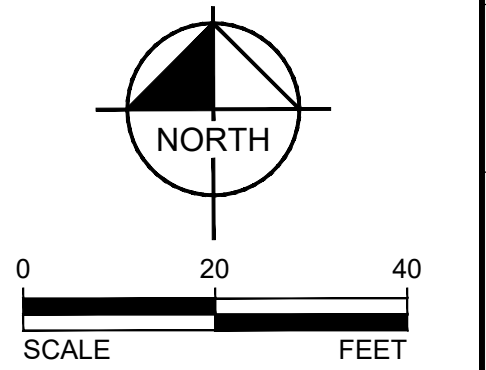
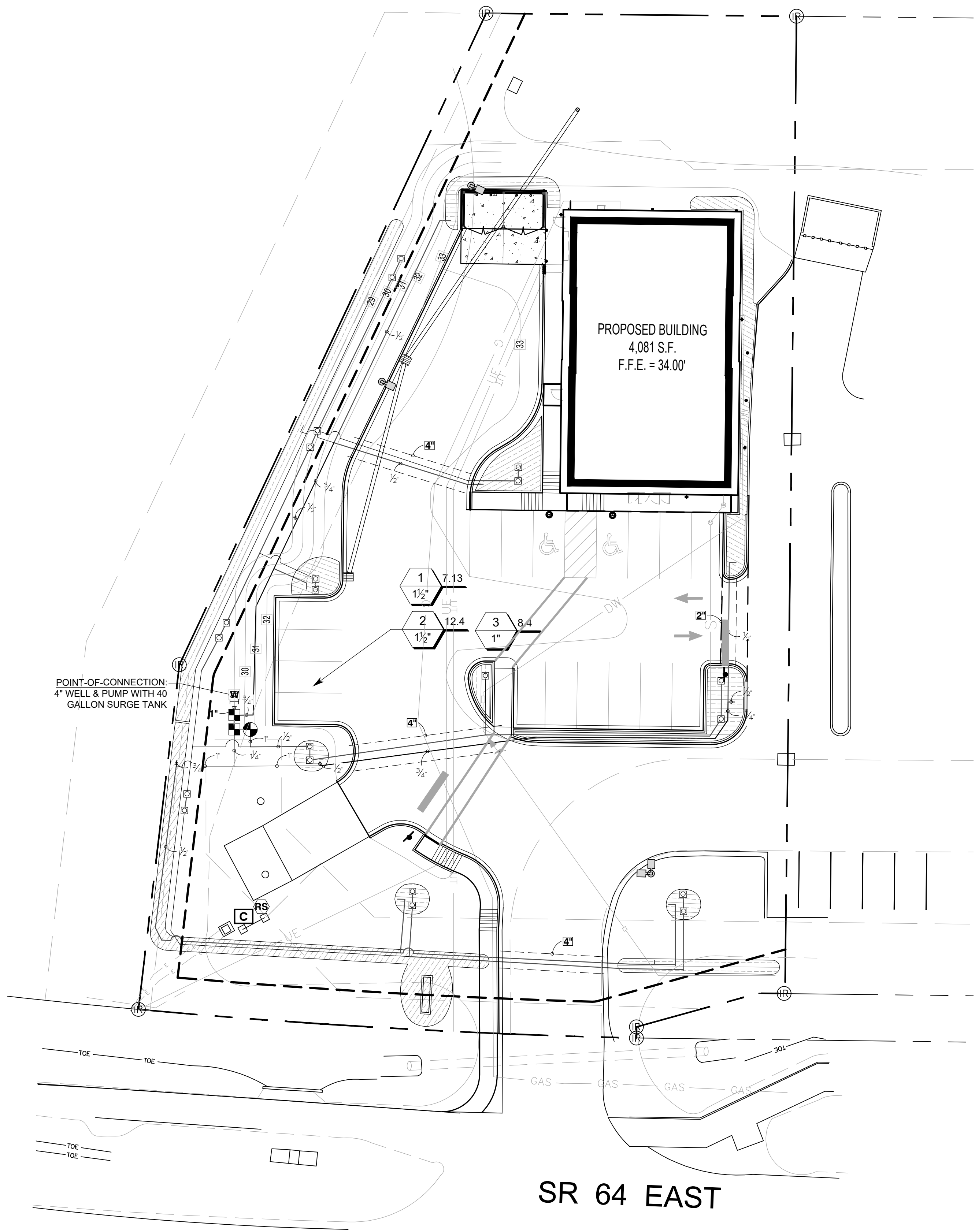
SCALE AS NOTED	DESIGNED BY GR	DRAWN BY BW	CHECKED BY GR
<b>LANDSCAPE DETAILS</b>			
SHERWIN WILLIAMS SR 64 EAST			
BRADENTON FLORIDA			
DATE 11/14/25			
PROJECT NO.			
SHEET NUMBER			
<b>L-1.1</b>			



NO.	REVISIONS	DATE	BY

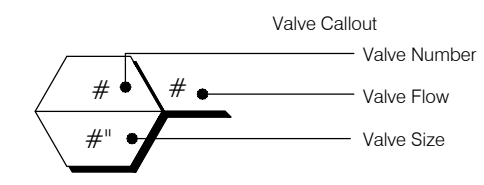
**ALOHA PACIFICA LLC**  
 LANDSCAPE ARCHITECTURE • WATER FEATURES  
 401-A E. FARIBANKS AVENUE WINTER PARK, FL 32789  
 (407) 538-9622 OFFICE ALOHAPACIFIC@GMAIL.COM





**IRRIGATION SCHEDULE**

SYMBOL	MANUFACTURER/MODEL/DESCRIPTION	QTY	PSI
	RAIN BIRD 1804-SAM-5 SERIES STREAM W/ PCS 5CST-020 STREAM BUBBLER 4" POPUP WITH CHECK VALVE AND PRESSURE COMPENSATING SCREEN.	21	30
	RAIN BIRD XZCZ-150-LCDR 1-1/2" HIGH FLOW CONTROL ZONE KIT. FOR LARGE COMMERCIAL DRIP ZONES. 1-1/2" PESB-R SCRUBBER GLOBE VALVE WITH SINGLE 1-1/2" PRESSURE REGULATING 40PSI QUICK-CHECK BASKET FILTERS. FLOW RANGE: 15-62 GPM.	2	
	AREA TO RECEIVE DRIPLINE RAIN BIRD XFD-09-18-NP XFD ON-SURFACE PRESSURE COMPENSATING LANDSCAPE DRIPLINE. 0.9 GPH EMITTERS AT 18" O.C. DRIPLINE LATERALS SPACED AT 18" APART, WITH EMITTERS OFFSET FOR TRIANGULAR PATTERN. UV RESISTANT. SPECIFY XF INSERT FITTINGS.	1,922 LF	
	RAIN BIRD PESBR 1" 1", 1-1/2", AND 2" DURABLE CHLORINE-RESISTANT VALVES FOR RECLAIMED WATER APPLICATIONS. WITH SCRUBBER MECHANISM TECHNOLOGY, AND PURPLE FLOW CONTROL HANDLE.	1	
	RAIN BIRD ESP8LXME-LXMM 8 STATION TRADITIONALLY-WIRED, COMMERCIAL CONTROLLER. INDOOR/OUTDOOR, PLASTIC WALL-MOUNT ENCLOSURE. INSTALL IN LXMM POWDER COATED, METAL WALL-MOUNTED CABINET.	1	
	RAIN BIRD RSD-BEX RAIN SENSOR, WITH METAL LATCHING BRACKET, EXTENSION WIRE.	1	
	POINT OF CONNECTION 4" 4" WELL & PUMP CAPABLE OF PROVIDING 45-50 GPM @ 50 PSI. 40 GALLON SURGE TANK.	1	
	IRRIGATION LATERAL LINE: PVC SCHEDULE 40 1/2"	1,055 LF	
	IRRIGATION LATERAL LINE: PVC SCHEDULE 40 3/4"	255.6 LF	
	IRRIGATION LATERAL LINE: PVC SCHEDULE 40 1"	29.3 LF	
	IRRIGATION LATERAL LINE: PVC SCHEDULE 40 1 1/4"	10.5 LF	
	IRRIGATION MAINLINE: PVC SCHEDULE 40 1"	12.4 LF	
	PIPE SLEEVE: PVC CLASS 200 SDR 21	133.6 LF	



**VALVE SCHEDULE**

NUMBER	MODEL	SIZE	TYPE	GPM	WIRE	PSI	PSI @ POC	PRECIP
1	RAIN BIRD XZCZ-150-LCDR	1-1/2"	AREA FOR DRIPLINE	7.13	61.8	40.1	40.1	0.64 in/h
2	RAIN BIRD XZCZ-150-LCDR	1-1/2"	AREA FOR DRIPLINE	12.09	57.7	41.7	42.1	0.64 in/h
3	RAIN BIRD PESBR	1"	BUBBLER	8.4	57.7	37.1	37.4	6.13 in/h
	Common Wire				12.4			

**CRITICAL ANALYSIS**

Generated: 2025-11-09 16:57

P.O.C. NUMBER: 01  
Water Source Information: 4" WELL & PUMP CAPABLE OF PROVIDING 45-50 GPM @ 50 PSI. 40 GALLON SURGE TANK.

**FLOW AVAILABLE**  
Point of Connection Size: 4"  
Flow Available: 373.9 GPM

**PRESSURE AVAILABLE**  
Static Pressure at POC: 50 PSI  
Pressure Available: 50 PSI

**DESIGN ANALYSIS**  
Maximum Station Flow: 12.09 GPM  
Flow Available at POC: 373.9 GPM  
Residual Flow Available: 361.81 GPM

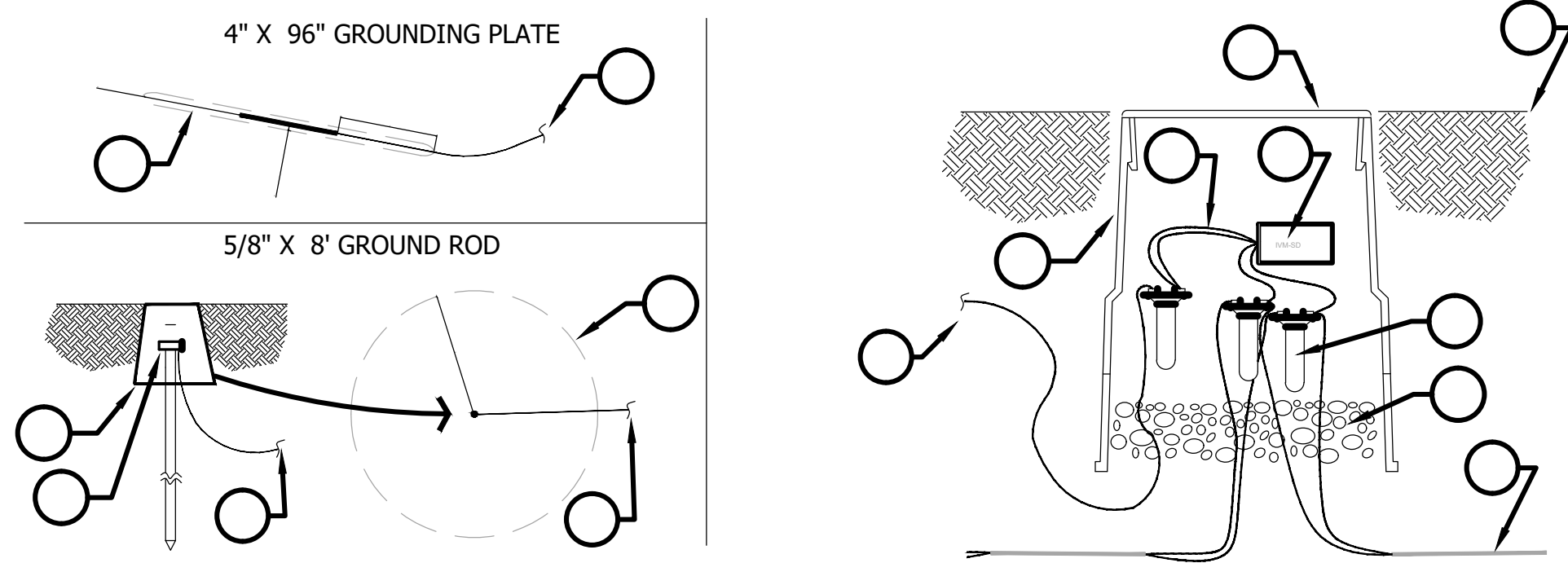
**Critical Station:** 2  
Design Pressure: 30 PSI  
Friction Loss: 5.22 PSI  
Fittings Loss: 0.52 PSI  
Elevation Loss: 0 PSI  
Loss through Valve: 6 PSI  
Pressure Req. at Critical Station: 41.7 PSI  
Loss for Fittings: 0.03 PSI  
Loss for Main Line: 0.29 PSI  
Loss for POC to Valve Elevation: 0 PSI  
Loss for Backflow: 0 PSI  
Critical Station Pressure at POC: 42.1 PSI  
Pressure Available: 50 PSI  
Residual Pressure Available: 7.94 PSI

NO.	REVISIONS	DATE	BY
<p>ALPHA PACIFICA LLC LANDSCAPE ARCHITECTURE • WATER FEATURES 401-A.E. FARRANOS AVENUE WINTER PARK, FL 32789 (877) 538-0602 OFFICE: ALPHAPACIFIC@GMAIL.COM</p>			
SCALE AS NOTED	DESIGNED BY GR	DRAWN BY BW	CHECKED BY GR
<b>IRRIGATION PLAN</b>			
SHERWIN WILLIAMS SR 64 EAST			FLORIDA
BRADENTON			
DATE	PROJECT NO.	SHEET NUMBER	
11/14/25		L-2.0	



REFERENCE NOTES SCHEDULE

- |  |   |                                  |
|--|---|----------------------------------|
| 1 FINISHED GRADE                             | 5 RAIN BIRD WC20 WIRE SPLICE KIT.                                   | 10 GROUND WIRE TO IVM-SD         |
| 2 RAIN BIRD VB-10RND VALVE BOX               | 6 RAIN BIRD MAXICABLE.  | 11 SPHERE OF INFLUENCE.          |
| 3 GREEN WIRE FROM IVM-SD TO BARE COPPER WIRE | 7 FILTER FABRIC.  | 12 RAIN BIRD VB-10RND VALVE BOX. |
| 4 LINE SURGE PROTECTOR; IVM-SD.              | 8 #8 SOLID STRAND GROUND WIRE TO GROUND ROD AND OR GROUNDING PLATE. | 13 CAD-WELD                      |
|  | 9 #8 SOLID STRAND GROUND WIRE TO IVM-SD.                            | 14 6-INCHES WASHED GRAVEL.       |

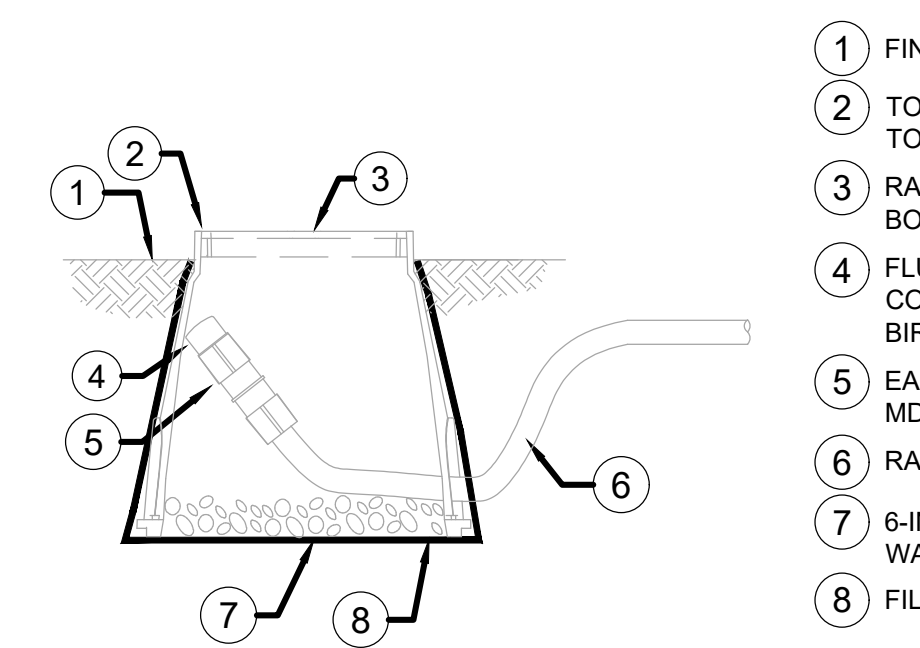


NOTES:

- MAXICABLE SHALL BE INSTALLED OUTSIDE OF SPHERE OF INFLUENCE.
- GROUND ROD SHALL BE USED AS FIRST PREFERENCE. IF LANDSCAPE AREA IS NARROW CAUSING SPHERE OF INFLUENCE OVERLAPS MAXICABLE, USE GROUNDING PLATE (RUNNING PARALLEL TO MAXICABLE).
- IF GROUND RESISTANCE PROVE TO BE HIGHER THAN 10 OHMS, USE BOTH GROUNDING ROD AND PLATE WITH 15 FEET SEPARATION
- GROUND WIRE SHALL HAVE MINIMUM 18-INCH COVER.
- GROUNDING PLATE SHALL HAVE MINIMUM 50 LBS GROUND ENHANCEMENT MATERIAL.

1 IVM-SD, LINE SURGE PROTECTOR

NTS



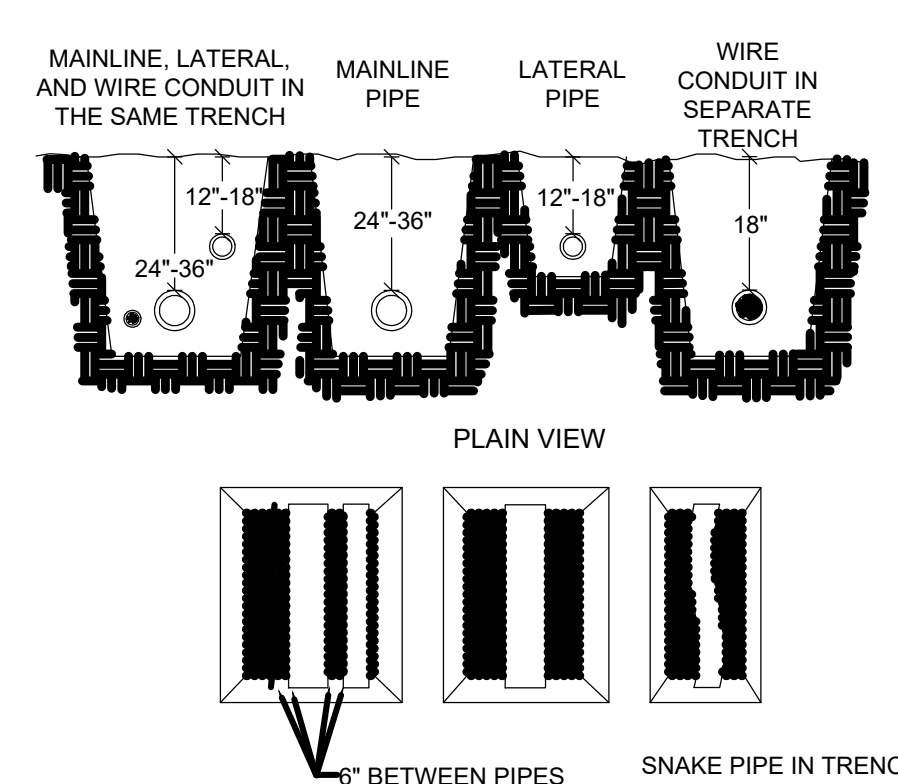
- FINISHED GRADE.
- TOP OF VALVE BOX FLUSH WITH TOP OF MULCH.
- RAIN BIRD VB10RNDPL VALVE BOX.
- FLUSH CAP FOR EASY FIT COMPRESSION FITTINGS: RAIN BIRD MDCFCAP.
- EASY FIT COUPLING: RAIN BIRD MDCFCOUP.
- RAIN BIRD "XF" BLANK TUBING.
- 6-INCHES THICK LAYER OF 3/4" WASHED GRAVEL.
- FILTER FABRIC

CONTRACTOR MUST PLACE (1) FLUSH POINT FOR EVERY (15) GPM FLOW PER DRIP GRID. MINIMUM (1) PER DRIP GRID.

NOTE:  
1. ALLOW A MINIMUM OF 6-INCHES OF DRIPLINE TUBING IN VALVE BOX IN ORDER TO DIRECT FLUSHED WATER OUTSIDE VALVE BOX.

3 RAIN BIRD DRIP LINE FLUSH POINT

NTS



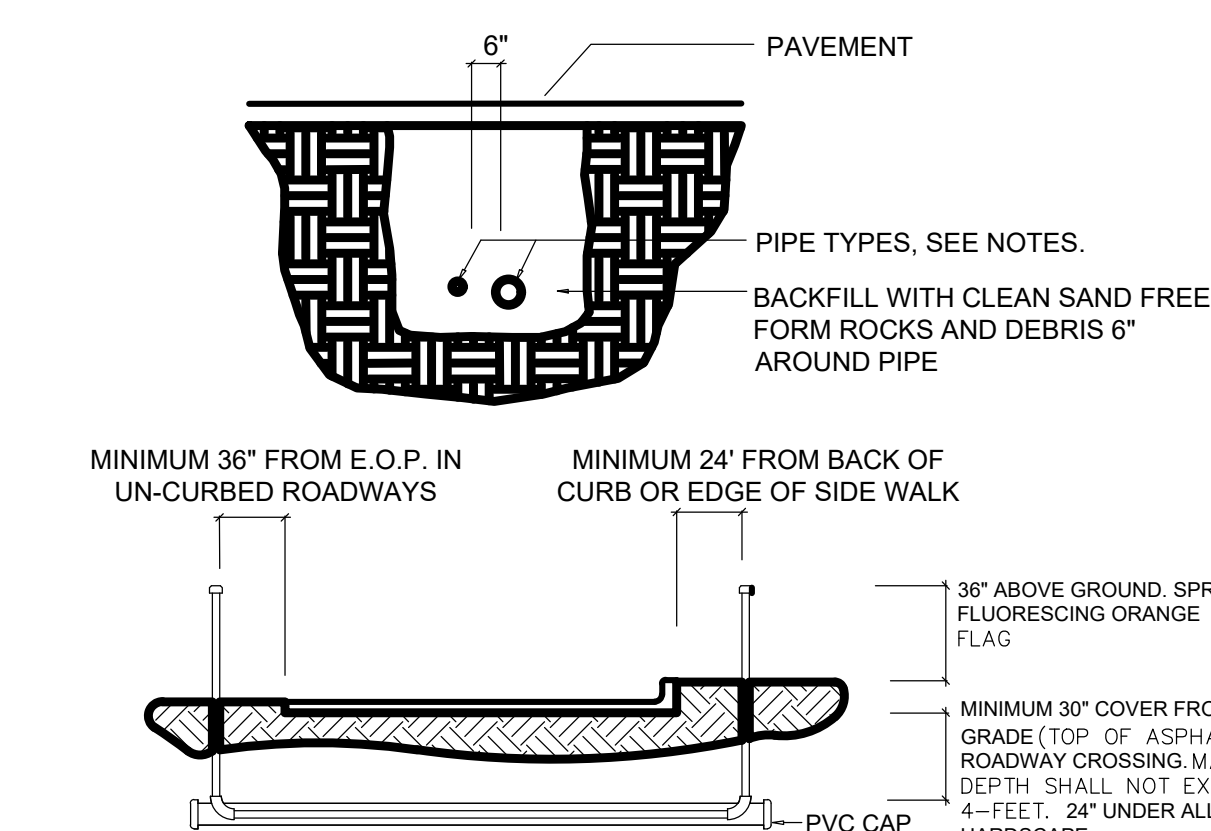
- NOTE:
- MINIMUM PIPE DEPTH SHALL BE PER DETAIL / LOCAL / STATE CODES, FROSTLINE, WHICHEVER IS MOST STRINGENT.
  - MAINLINE AND LATERAL PIPE, TYPE AND DEPTH UNLESS OTHERWISE NOTED IN SPECIFICATIONS.
  - PIPE IN THE SAME TRENCH SHALL HAVE MINIMUM 6" HORIZONTAL & VERTICAL SEPARATION.
  - IF ROCK OR OTHER DEBRIS IS ENCOUNTERED, CONTRACTOR SHALL HAVE MINIMUM IMBED PIPE 3/4" IN 4" OF SAND, AND 3" - 4" IN 6" OF SAND. FOR LARGER PIPE, SEE SPECIFICATIONS
  - CONTACT BACKFILL TO 95% DENSITY.
  - CONTRACTOR TO REPAIR ALL SINK HOLES AND DEPRESSIONS UNDER WARRANTY PERIOD AT NO COST TO OWNER.
  - LATERAL PIPE IN R.O.W. SHALL HAVE MINIMUM 18" COVER.

6 PIPE TRENCH DETAIL

NTS

4 RAIN BIRD TDS-050 (WITH BEND) DRIP STAKES

NTS



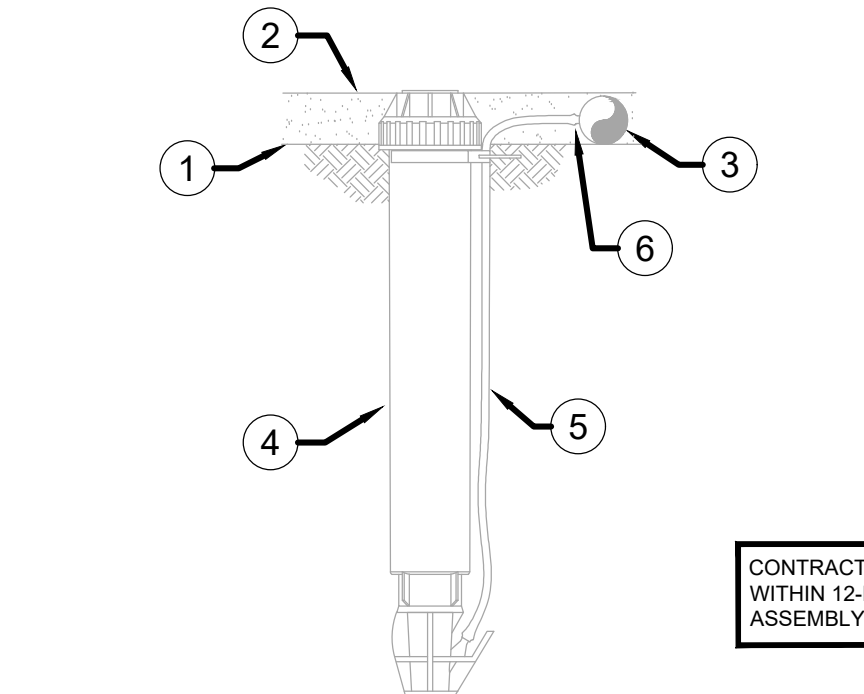
- NOTE:
- UNDER ROADWAY: ALL PVC SLEEVING SHALL BE SCH-40 PIPE FOR SIZES UP TO 4". SLEEVING 6" OR LARGER SHALL BE CL200. UNDER COUNTY AND STATE ROADWAY, ALL SLEEVES TO BE SCH-80.
  - UNDER SIDEWALK AND OTHER HARDSCAPE: ALL SLEEVING TO BE SCH-40.
  - SLEEVING TO BE TWO PIPE SIZES LARGER THAN OF CARRYING PIPE. ONLY ONE PIPE PER SLEEVE.
  - ALL JOINTS TO BE SOLVENT WELD.
  - WHERE THERE IS MORE THAN ONE SLEEVE IN TRENCH, EXTEND THE SMALLER SLEEVE TO 36" ABOVE FINISHED GRADE.
  - WHEN MULTIPLE PIPES ARE LAID IN THE SAME TRENCH, MAINTAIN MINIMUM 6" SEPARATION BETWEEN PIPE BELL JOINTS.
  - MECHANICALLY TAMP TO 95% PROCTOR.

7 ROADWAY / HARDSCAPE SLEEVING

NTS

2 RAIN BIRD XFS-P DRIPLINE

NTS



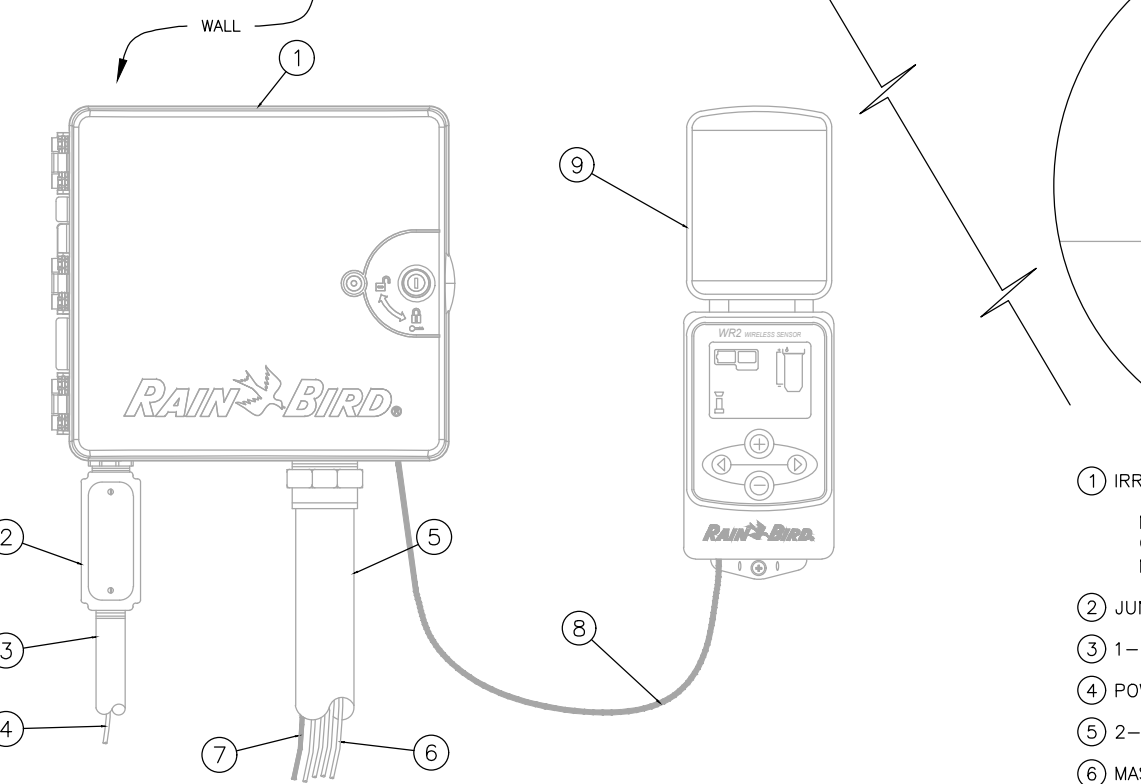
- FINISHED GRADE.
- TOP OF MULCH.
- ON SURFACE DRIP TUBING.
- OPERATION INDICATOR.
- 1/4" TUBING - PROVIDED WITH POP-UP.
- CONNECT TO DRIP TUBING. RAIN BIRD 1/4" XBF1CONN.

CONTRACTOR MUST PLACE OPERATION INDICATOR WITHIN 12-INCHES OF FLUSH POINT / VALVE ASSEMBLY. EXTEND 1/4-INCH TUBING AS NECESSARY.

- NOTES:
- USE XERIMAN TOOL XM-TOOL TO INSERT BARB TRANSFER FITTING DIRECTLY INTO DRIPLINE TUBING.
  - VAN NOZZLE MAY BE SET TO CLOSE, OR IF IT IS DESIRED TO SEE SPRAY FROM NOZZLE, SET THE ARC TO 1/2 PATTERN. THE FLOW FROM NOZZLE MUST BE DIRECTED WITHIN PLANTING AREA, VISIBLE ENOUGH TO BE SEEN / LOCATED BY MAINTENANCE PERSON.

5 RAIN BIRD OPERATION INDICATOR

NTS



- NOTE:
- ESP-LIMEF CONTROLLER IS AVAILABLE IN 8- OR 12-STATION BASE MODELS. ADDITIONAL MODULES IN 8- AND 12-STATION VERSIONS MAY BE ADDED TO BRING THE CONTROLLER UP TO 48 STATIONS MAXIMUM.
  - FOR EDGE OF INSTALLATION INTO A CONTROLLER WITH MORE THAN 24 STATIONS, INSTALL A JUNCTION BOX AT THE BASE OF CONTROLLER AND TRANSITION LARGER VALVE AND COMMON WIRES FROM FIELD TO 18 AWG MULTI CONDUCTOR WIRE TO BE USED IN CONTROLLER.
  - USE STEEL CONDUIT FOR ABOVE GRADE AND SCH 40 PVC CONDUIT FOR BELOW GRADE CONDITIONS.
  - PROVIDE PROPER GROUNDING COMPONENTS TO ACHIEVE GROUND RESISTANCE OF 10 OHMS OR LESS.

- SENSOR NOTES:
- SENSOR MAY BE MOUNTED ON FENCE, FENCE POST, GUTTERS, OR BUILDING WALLS.
  - SENSOR SHOULD NOT BE MOUNTED UNDER TREES, SHAWES, OR IN AREAS AFFECTED BY SPRINKLER SYSTEM OPERATION.
1. IRRIGATION CONTROLLER: RAIN BIRD ESP-LIMEF CONTROLLER WITH FLOW SMART MODULE IN PLASTIC CABINET WITH WALL MOUNT. INSTALL CONTROLLER AND CABINET ON WALL PER MANUFACTURER'S RECOMMENDATIONS.
- JUNCTION BOX
  - 1-INCH CONDUIT AND FITTINGS TO POWER SUPPLY
  - POWER SUPPLY WIRE
  - 2-INCH CONDUIT AND FITTINGS FOR STATION WIRES
  - MASTER VALVE AND REMOTE CONTROL VALVE WIRES
  - FLOW SENSOR WIRE (PE 39, 89 OR 54) TO FLOW SENSOR
  - CABLE HARNESS FOR CONTROLLER INTERFACE (30" MAXIMUM)
  - RAIN BIRD WR2 WIRELESS SENSOR CONTROLLER INTERFACE
- FOR BEST PERFORMANCE, THE CONTROLLER INTERFACE SHOULD BE INSTALLED AT LEAST FIVE FEET ABOVE THE GROUND.
  - IT IS RECOMMENDED THAT THE CONTROLLER INTERFACE BE INSTALLED AWAY FROM SOURCES OF ELECTRICAL INTERFERENCE (SUCH AS TRANSFORMERS, GENERATORS, PUMPS, FANS, ELECTRICAL METER BOXES) AND METAL OBJECTS TO MAXIMIZE COMMUNICATION RANGE.
- 10 RAIN BIRD WR2 SENSOR

8 IRRIGATION CONTROLLER W/ RAIN SENSOR

NTS

NOTES:

- DISTANCE BETWEEN LATERAL ROWS AND EMITTER SPACING TO BE BASED ON SOIL TYPE, PLANT MATERIALS AND CHANGES IN ELEVATION. SEE INSTALLATION SPECIFICATIONS ON RAIN BIRD WEB SITE (WWW.RAINBIRD.COM) FOR SUGGESTED SPACING.
- LENGTH OF LONGEST DRIPLINE LATERAL SHOULD NOT EXCEED THE MAXIMUM SPACING SHOWN IN THE ACCOMPANYING TABLE.

- OF-HEADER
- PRE-INSTALLED BARB FITTING
- FLUSH POINT WITH PVC CAP OR OPTIONAL PVC BALL VALVE
- PERIMETER OF AREA
- PERIMETER DRIPLINE PIPE TO BE INSTALLED 2"-4" FROM PERIMETER OF AREA
- PVC SUPPLY PIPE FROM RAIN BIRD CONTROL ZONE KIT (SIZED TO MEET LATERAL FLOW DEMAND)
- OF-HEADER
- RAIN BIRD XFS SERIES DRIPLINE (TYPICAL)
- MALE ADAPTER INSERT
- STAINLESS STEEL OETIKER OR MURRAY CLAMP
- OPERATION INDICATOR RAIN BIRD MODEL: OPERIND
- PVC SCH 40 CAP
- PVC SCH 40 BALL VALVE
- RAIN BIRD XF SERIES BLANK TUBING
- BARB X BARB INSERT TEE: RAIN BIRD XFF-TEE (TYPICAL)
- PVC SCH 40 ELL (TYPICAL)
- PVC SCH 40 RISER PIPE
- XF SERIES TIE-DOWN STAKES (TDS-050) REFER TO RAIN BIRD DRIPLINE DESIGN GUIDE FOR PROPER SPACING

SCALE NOTED	DESIGNED BY	DRAWN BY	CHECKED BY
GR	GR	BW	GR
IRRIGATION DETAILS			
SHERWIN WILLIAMS SR 64 EAST			
FLORIDA			
BRADENTON			
DATE	PROJECT NO.	SHEET NUMBER	
11/14/25		L-2.1	



NO.	REVISIONS	DATE	BY

ALOHA PACIFICA LLC  
LANDSCAPE ARCHITECTURE • WATER FEATURES  
401-A E. FAIRBANKS AVENUE WINTER PARK, FL 32789  
(407) 588-9622 OFFICE ALOHAPACIFIC@GMAIL.COM

