

**Utility and Infrastructure Water Management Plan**

**Purpose**

Due to the potential of rain during this construction project and the elevated groundwater, Ripa will need to dewater areas of the job site where pond construction and utility/pipe installation activities occur. Ripa will utilize on site ponds (Outlined in YELLOW), flood plain mitigation areas, MS4 Systems, sumps and temporary sediment basins (Outlined in BLUE) when dewatering exposed groundwater. These areas are designed to contain water long enough that State water quality criteria is met prior to discharge off site. Temporary Sediment Basins vary in size and are typically 300'x80' (sizes change based on water volume) and will accommodate up to four feet of water vertically prior to out falling through a discharge pipe or relieved with a pump into a discharge area. Water flow direction from the basin(s) are identified on this plan by blue arrows. Groundwater from sock or well-point systems will be directed to one of the sediment basins or to discharge areas built near the perimeter of the job site. All Temporary Sediment Basins, discharge areas and pumps will be set up as needed in areas of the job site that allow the best placement at the time of the needed pumping activity. Due to the ever-changing environment these locations cannot be identified on this plan. All waters discharging from this project will be directed into MS4 systems, wetlands and tributaries associated with the permitted project at a flow rate lower than the requirements for a State water use permit.

**Discharge Location**

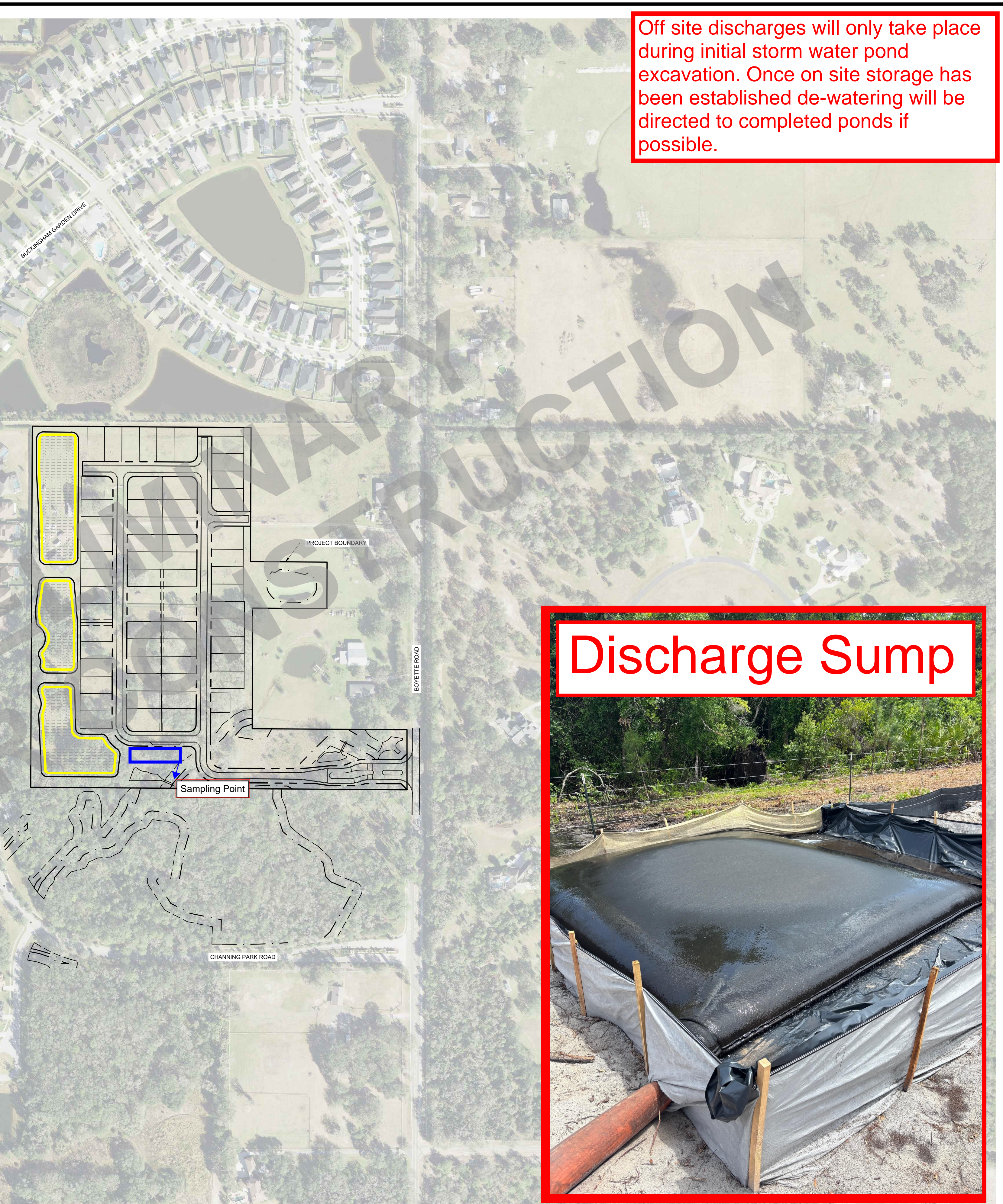
Groundwater drawn from sock or well-point systems will be directed into on site ponds, flood plain mitigation areas or discharge areas constructed on-site for this project. All discharge areas are located in "as-needed" locations along the inside perimeter of the job-site. They are designed to retain sediment and reduce the velocity at the end of the hose prior to discharging off site. Water removed from the ground using a rotary pump will average a flow rate of approximately 150 gallons a minute or less. Areas of exposed ground water or surface water dewatered using a centrifugal pump will average a flow rate of approximately 800 gallons a minute or less. Only water meeting all State water quality criteria will be directed into discharge areas that are constructed of an impermeable liner and high-flow material that allows the water to be transported off-site without causing erosion at the discharge.

**Water Quality Monitoring**

Ripa's environmental department, with the use of a LaMotte 2020e Nephelometric Turbidity Unit (NTU) meter, will monitor all pond and off-site discharges at least twice a day. Sampling locations will include any groundwater pumping discharge point and any temporary sediment basin outfall. The NTU of the discharge will be measured and compared to background water quality to ensure compliance with State water quality criteria of 29 NTUs above background. This will allow adjustments in discharge locations or dewatering methodologies, if necessary. Dewatering operations will be terminated if discharges exceed 29 NTUs above background.

**Water Level Monitoring**

Ripa will monitor water levels to ensure that the ponds and wetlands are not overloaded beyond their ability to accommodate a design storm. In general, Ripa will make efforts to keep the ponds at a level between the water quality treatment bleed-down elevation associated with the ponds control structure and the attenuation weir crest elevation such that the full attenuation volume of the pond is available to accommodate stormwater runoff without adverse downstream impacts. The ponds and wetlands involved are of a size such that the potential for overloading them as a result of dewatering activities is remote.



Off site discharges will only take place during initial storm water pond excavation. Once on site storage has been established de-watering will be directed to completed ponds if possible.



**LEVELUP CONSULTING, LLC**

505 E. JACKSON STREET  
SUITE 200  
TAMPA, FLORIDA 33602  
OFFICE: 813-375-0616  
WWW.LEVELUPFLORIDA.COM

CONSTRUCTION PLAN REVISIONS	REVISED PER COUNTY & SWFWMD COMMENTS	REVISED PER COUNTY & SWFWMD COMMENTS	REVISED PER COUNTY & SWFWMD COMMENTS
1	12/04/25		
2	03/12/26		
3	04/08/26		

**BOYETTE ROAD SUBDIVISION**

CLIENT: DAVID WEEKLEY HOMES

AERIAL SITE PLAN

Engineering Business Certificate of Authorization No. 32771  
Florida Certificate of Authorization No. LC26000638

**BRANDON S. WILSON**  
FLORIDA LICENSED PROFESSIONAL ENGINEER  
REGISTRATION NUMBER 79423

PROJECT No. 24357-01-02

SHEET C 3.0

4/30/2026 10:06:12 AM PLOTTED BY: jackson.galano  
T:\Projects\24357-01 Boyette - This Drawing\24357-01-02 Construction Plans\Current Plans\24357-01-02-ASPT.dwg